


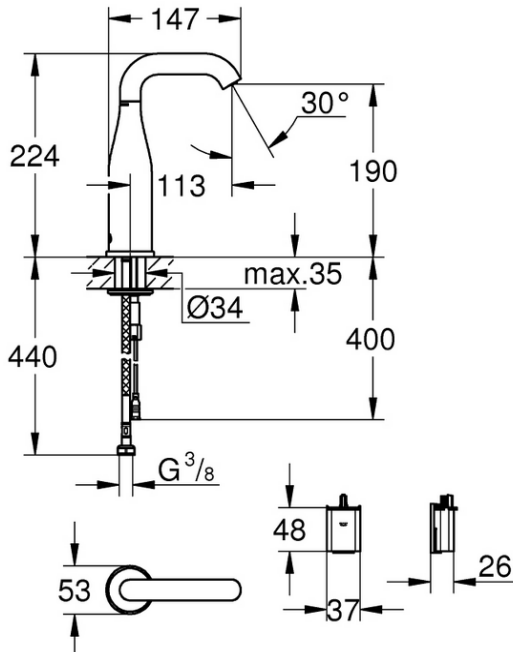
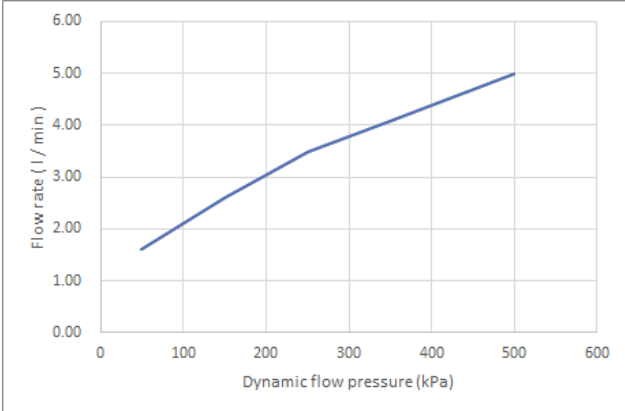




PROJECT		REF		REV	ITEM CODE	
LOCATION		DATE			PAGE	

## SANITARY WARE SPECIFICATION SHEET

Item Descriptions	GROHE (Germany) "Essence E" Chrome plated 3/8" infra-red electronic basin tap supplied with one pair of stainless steel wire braided water inlet flexible hose, DC supply; nominated flow rate <b>3.4 L/min</b> in WELS <b>Grade 2</b> ; Registration No. TN 20-0006	Illustration/ Drawing
Dimensions	L147 x W53 x H224 mm	
Model	36446000	
Finish / Material	Chrome Plated	
Country of origin	Germany	
Manufacturer	GROHE Limited	
Supplier	Acme Sanitary Ware Co. Ltd Mr. Eric Wong/ Mr. Don Yuen	
Contact Tel/Fax	(852) 2388-7171 / (852) 2710-8012	
E-mail	acme@acmesanitary.com.hk	
Website	www.acmesanitary.com.hk	
<ul style="list-style-type: none"> <li>with infrared sensor for bi-directional communication for monitoring, configuration and servicing</li> <li>for cold or premixed water</li> <li>6V lithium battery, type CR-P2</li> <li>battery lifetime approx. 7 years (150 actuations a day)</li> <li><b>GROHE StarLight</b> chrome finish</li> <li>adjustable swivel area 0° / 150° / 360°</li> <li>laminar spray regulator 5.0 l/min</li> <li>flexible connection hose</li> <li>dirt strainer</li> <li>with integrated solenoid valve</li> <li>external battery</li> <li>rapid installation system</li> <li>multistage battery status display</li> <li>7 pre-set programs</li> <li>auto flush</li> <li>thermal disinfection</li> <li>cleaning mode</li> <li>additional functions and precise settings by remote control 36 407</li> <li>CE approved</li> <li>noise classification 1 in accordance with DIN4109</li> <li>type of protection faucet IP 59K</li> </ul>		  
		



# Acme Sanitary Ware Co. Ltd.

1/F, Acme Building, 22-28 Nanking Street, Kowloon, Hong Kong

Tel: 2388 7171 Fax: 2710 8012

Email: acme@acmesanitary.com.hk

Website: www.acmesanitary.com.hk

Since 1949

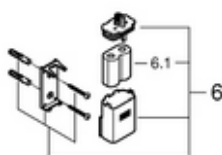
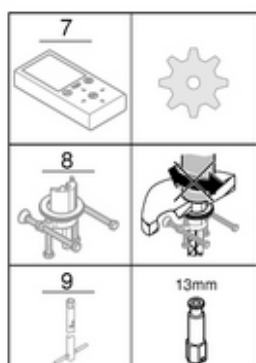
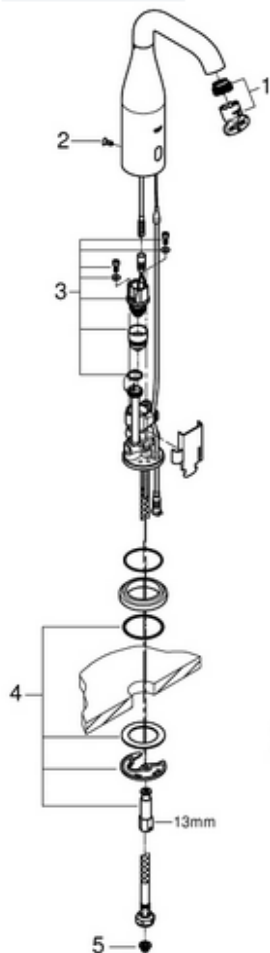


Pure Freude  
an Wasser

PROJECT		REF		REV	ITEM CODE	
LOCATION		DATE			PAGE	

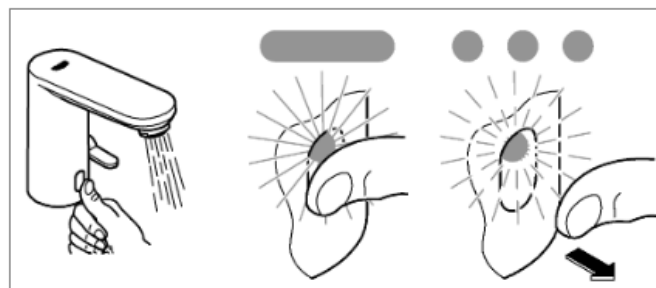
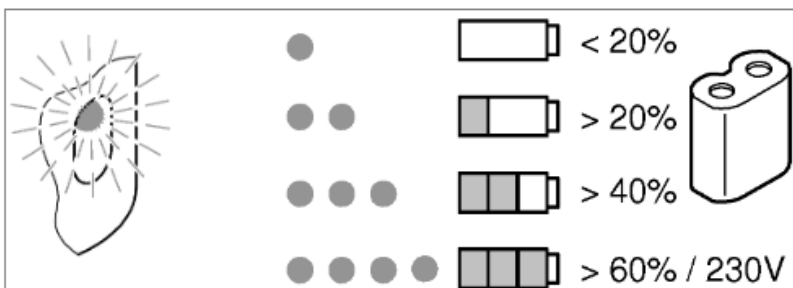
## SANITARY WARE SPECIFICATION SHEET

### SPARE PARTS

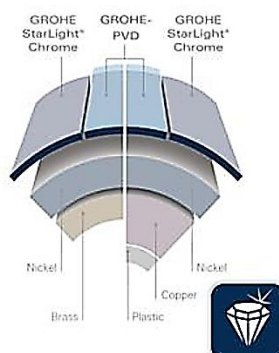


Made-to-last, scratch resistant surfaces ranging from precious matt to shiny like a diamond.

GROHE products are guaranteed to look as beautiful decades on as they did the day you first fell in love with them. The special recipe to success lies in the long-lasting surface quality: GROHE StarLight® Technology. Continuous improvement over the last 75 years has seen GROHE's unique plating process refined to produce a robust and immaculate surface that is recognised as one of the best finishes in the world. This is thanks to rigorous quality controls and ongoing investment towards manufacturing exceptional products for you to enjoy.



### GROHE StarLight®



GROHE surface hardness



GROHE scratch resistance



Pos.-nr.	Prod. description	Order-nr.
1	Laminar flow straightener	48376000
2	Screws	4283100M
3	Solenoid valve	42479000
4	Mounting set	42400000
5	Dirt strainer	4241300M
6	Battery housing	42393000
6.1	Battery	42886000
7	Remote control	36407001*
8	Rotation lock	36276000*
9	Mounting wrench	19017000*

\* Optional accessories

Note:

\* All information of the above is for the reference only. No prior notice is made if any changes.



自願參與用水效益標籤計劃 - 水龍頭  
Voluntary Water Efficiency Labelling Scheme - Water Taps



茲證明

This is to certify that



將下列水龍頭在本計劃內註冊：  
has registered the following water tap under this scheme :

牌 子 / Brand	:	GROHE
型 號 / Model	:	36446000 + 492323031
種 類 / Type	:	Non-mixing
原產地 / Country or Region Origin	:	Germany (Tap & Flow Controller)

在用水效益標籤上展示的標誌

*Symbolic Presentation on the Water Efficiency Label*

:



滴水點

*Water droplet(s)*

用水效益級別

*Water Efficiency Grade*

:

2

with additional merit\*

耗水量

*Water Consumption*

:

3.4

公升/分鐘

*litres/minute*

\*with additional merit of "Automatic closing mechanism"

簽發日期：  
Date of Issue:

20 March 2020



水務署

Water Supplies Department



水務署署長(張業駒代行)  
for Director of Water Supplies





署

Supplies Department

Headquarters

灣仔告士打道七號入境事務大樓 48 樓

7/F, Immigration Tower, 7 Gloucester Road, Wan Chai, Hong Kong

本署檔號 : (2) in WSD 3321/18 Pt.1 T/J(852)  
Our ref.  
來函檔號 :  
Your ref.

電話 :  
Tel.  
傳真 : 2824 0578  
Fax.

30 August 2018



**Approval of "GROHE" Sensor Tap  
(General Acceptance No. C20180568)**

Your letter ref. WRC/1898 dated 16 July 2018 refers.

Having considered the test report ref. J22623A issued on 26 June 2018 by Nutek Systems (HK) Ltd., this Authority accepts that the fitting described below complies with, and its use when correctly installed does not contravene, the Waterworks Ordinance and Regulations.

**Name of Manufacturer:** Grohe AG

**Country of Origin:** Germany

**Brand:** Grohe

**Details of Fitting:** 3/8" Infra-red electronic basin tap supplied with one pair of stainless steel wire braided water inlet flexible hose (manufactured by Neoperl GmbH. Model: Neoflex SPX DN6 G3/8") approved by UK's WRAS under ref. 1506306

**Model:** 36446000

**Body Markings:** 



**Expiry Date:** 19 June 2023 (for mixer)  
30 June 2020 (for hose)

This Authority hereby permits the use of the above fitting in fresh water plumbing systems subject to full adherence to Waterworks installation requirements. In particular, you are required to draw your customers' attention to the following requirement-

"A stop cock or gate valve must be installed at the upstream of the fitting for manual isolation of water supply." AND

"The main voltage operated sensor valve should comply with the electricity safety regulation for applications in bathroom, toilet etc."

A condition of this acceptance is that the fitting to be installed shall be replicas of the sample as certified by the testing agent mentioned above and without modifications. This acceptance may be withdrawn at any time if the standard of the fitting installed fail to meet that of the approved sample or if the fitting is found to be unsuitable for use in fresh water plumbing systems.

For the use of the fitting in any project, the General Acceptance Number of this letter must be quoted as a means of identification of acceptance of the fitting by this Authority.

Should you have any enquiries, please contact our Engineer Mr. Terry KUNG at tel. no. 3583 4086.

Yours faithfully,



(CHAN Chung-kun)

for Director of Water Supplies

Encl.

c.c. WSD 3321/1/82 ] - without catalogue  
ME/MC ] - with soft copy only